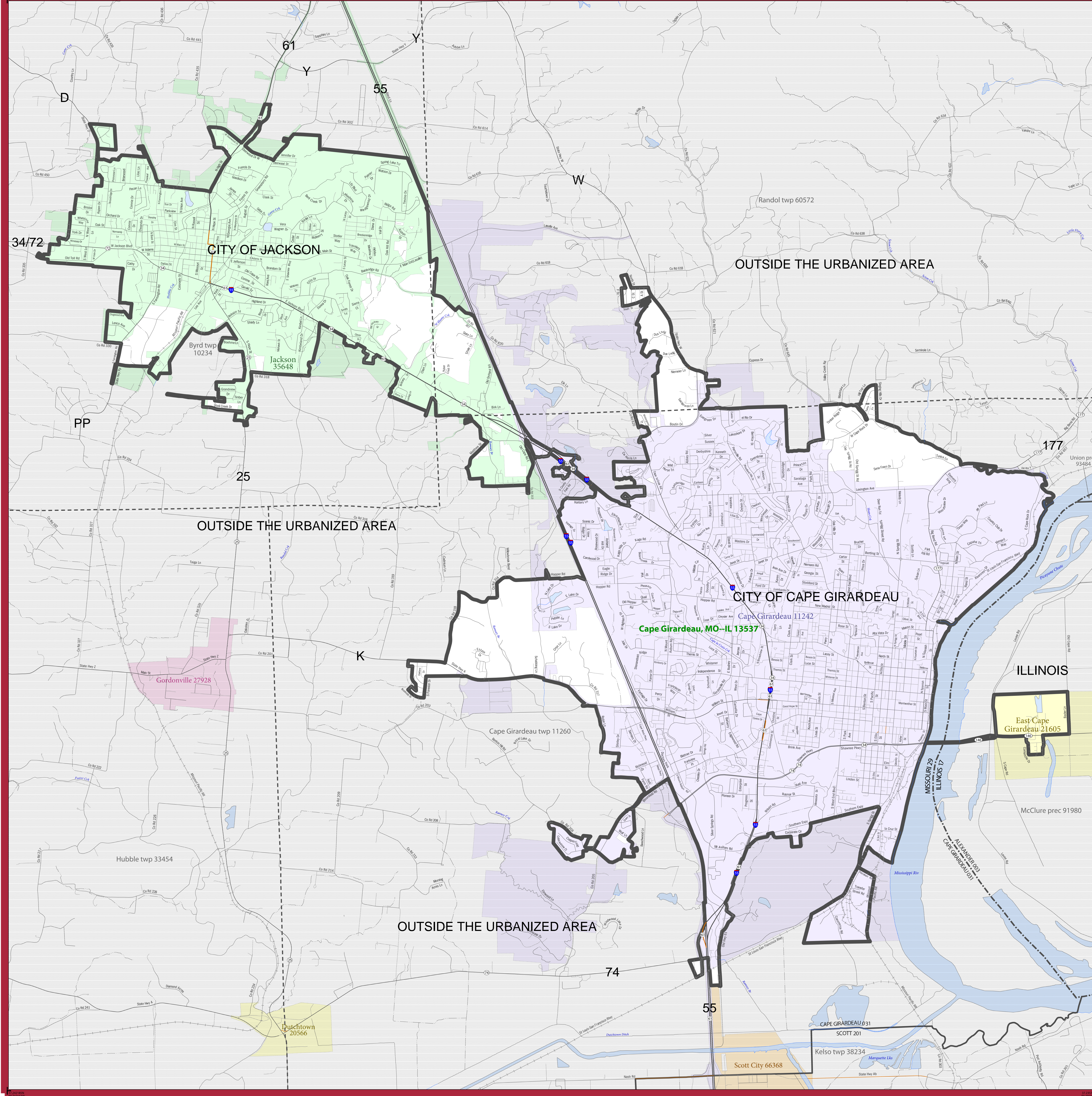


2010 CENSUS - URBANIZED AREA REFERENCE MAP: Cape Girardeau, MO-IL



LEGEND

SYMBOL DESCRIPTION	SYMBOL	LABEL STYLE
International	--- ---	CANADA
Federal American Indian Reservation	L'ANSE RES 1880
Off-Reservation Trust Land	T1880
Urbanized Area	Dover, DE 24580
Urban Cluster	Toolee, VT 88057
State (or statistically equivalent entity)	--- ---	NEW YORK 36
County (or statistically equivalent entity)	---	ERIE 029
Minor Civil Division (MCD) 1.2	---	Bristol town 07485
Consolidated City	MILFORD 47500
Incorporated Place 1.3	Davis 18100
Census Designated Place (CDP) 2	Incline Village 35100

DESCRIPTION	SYMBOL	DESCRIPTION	SYMBOL
Interstate	Water Body
U.S. Highway	Military
State Highway	Outside Subject Area
Other Road		
Railroad		
Perennial Stream		
Intermittent Stream		

Where international, state, county, and/or MCD boundaries coincide, the map shows the boundary symbol for only the highest-ranking of these boundaries.

1 A " " following an MCD name denotes a false MCD. A " " following a place name indicates that a false MCD exists with the same name and FIPS code as the place; the false MCD label is not shown.

2 MCD boundaries are shown in the following states in which some or all MCDs function as general-purpose governmental units: Connecticut, Illinois, Indiana, Kansas, Maine, Massachusetts, Michigan, Minnesota, Missouri, Nebraska, New Hampshire, New Jersey, New York, North Dakota, Ohio, Pennsylvania, Rhode Island, South Dakota, Vermont, and Wisconsin. (Note that Illinois and Nebraska have some counties covered by nongovernmental precincts and Missouri has most counties covered by nongovernmental townships.)

3 Place label color corresponds to the place fill color.
Label colors: Davis Davis Davis Davis Davis

SUBJECT AREA COUNTIES ON MAP SHEET
 17003 Alexander
 29031 Cape Girardeau

The Cape Girardeau County Stormwater Management Plan applies to those parts of the County that are inside the green boundary line but outside the city limits of the City of Cape Girardeau shaded in blue and the City of Jackson shaded in green.

A copy of the map may be viewed on the Cape Girardeau County web site at www.capecounty.us under the Stormwater Management Section.

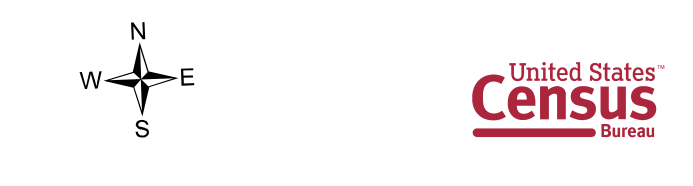
All legal boundaries and names are as of January 1, 2010. Urban areas are based on results from the 2010 Decennial Census. The boundaries shown on this map are for Census Bureau statistical data collection and tabulation purposes only; their depiction and designation for statistical purposes does not constitute a determination of jurisdictional authority or rights of ownership or entitlement.

Geographic Vintage: 2010 Census (reference date: January 1, 2010)
 Data Source: U.S. Census Bureau's MAI/TIGER database (TAB10)
 Map Created by Geography Division: March 09, 2012

U.S. DEPARTMENT OF COMMERCE Economics and Statistics Administration U.S. Census Bureau

Projection: Albers Equal Area Conic
 Datum: NAD 83
 Spheroid: GRS 80
 1st Standard Parallel: 36 45 55
 2nd Standard Parallel: 39 50 38
 Central Meridian: -92 51 50
 Latitude of Projection's Origin: 35 59 44
 False Easting: 0
 False Northing: 0

0 0.8 1.6 2.4 3.2 4 Kilometers
 0 0.4 0.8 1.2 1.6 Miles
 The plotted map scale is 1:27068



PARENT SHEET 1
 Total Sheets: 1
 Index Sheets: 0
 Parent Sheets: 1

UA NAME: Cape Girardeau, MO-IL
 UA CODE: 13537
 ENTITY TYPE: Urbanized Area (UA)
 ST: Illinois (17), Missouri (29)